

SOA Suite Setup for BPEL Process Flow
Oracle FLEXCUBE Investor Servicing
Release 14.5.3.0.0
[February] [2022]



Table of Contents

- 1. PREFACE 1-1**
 - 1.1 BACKGROUND 1-1
 - 1.2 AUDIENCE 1-1
 - 1.3 ORGANIZATION 1-1
 - 1.4 ACRONYMS AND ABBREVIATIONS 1-1

- 2. INSTALLING THE JDK, WEBLOGIC, RCU, SOA AND DOMAIN CREATION.....2**
 - 2.1 INTRODUCTION2
 - 2.2 LIST OF DOWNLOADED FILES2
 - 2.3 INSTALL JDK.....3
 - 2.4 INSTALLING WEBLOGIC SERVER SOFTWARE4
 - 2.5 INSTALLING ORACLE FUSION MIDDLEWARE 12C SOFTWARE.....9
 - 2.6 CREATING PRODUCT SCHEMAS IN ORACLE DATABASE.....13
 - 2.7 WEBLOGIC SERVER DOMAIN CONFIGURATION21
 - 2.8 REMOTE SETUP CONFIGURATION30

1. Preface

1.1 Background

This document provides an overview of configuring SOA suite for Oracle FLEXCUBE Investor Servicing BPEL process deployment.

Refer to the Oracle documentation for HA and other configuration patterns.

1.2 Audience

The audience for this document will be the development groups of BPEL/BPM process flows Oracle FLEXCUBE Investor Servicing.

1.3 Organization

This manual is organized as follows:

- The document helps in download and installation of Oracle SOA 12c.

1.4 Acronyms and Abbreviations

Acronym/Abbreviation	Description
BPEL	Business Process Execution Language
HA	High Availability

2. Installing the JDK, WebLogic, RCU, SOA and Domain Creation

2.1 Introduction

The download of software can be done from the oracle edelivery portal

<https://edelivery.oracle.com>

Refer to the Oracle certification matrix for qualified databases.

2.2 List of downloaded files

Latest Oracle JDK 8 Update for Linux x86-64

Search: Oracle Fusion Middleware 12c Infrastructure 12.2.1.2.0 (**WebLogic Installation**)

V78156-01.zip– Oracle Fusion Middleware 12c (12.2.1.2.0) Infrastructure

Search: Oracle Business Process Management 12.2.1.0.0 (**BPM/BPEL**)

V78169-01.zip– Oracle Fusion Middleware 12c (12.2.1.2.0) SOA Suite and Business Process Management

List of platform which can be selected based on the installation platform

<input type="checkbox"/>	HP-UX Itanium
<input type="checkbox"/>	IBM AIX on POWER Systems (64-bit)
<input type="checkbox"/>	IBM z/OS on System z
<input type="checkbox"/>	IBM: Linux on System z
<input type="checkbox"/>	Linux x86-64
<input type="checkbox"/>	Microsoft Windows (32-bit)
<input type="checkbox"/>	Microsoft Windows x64 (64-bit)
<input type="checkbox"/>	Oracle Solaris on SPARC (32-bit)
<input type="checkbox"/>	Oracle Solaris on SPARC (64-bit)
<input type="checkbox"/>	Oracle Solaris on x86-64 (64-bit)
<input type="button" value="Select"/> <input type="button" value="Cancel"/>	

Search by

Download Queue <input type="button" value="Continue"/>	
Selected Item	Platform
Release: Oracle SOA Suite 12.2.1.0.0	Linux x86-64
Release: Oracle Business Process Management 12.2.1.0.0	Linux x86-64

NOTE (Doc ID 1904280.1): As part of the new Release of SOA 12c, you need to get WebLogic 12c through the Oracle Fusion Middleware Infrastructure installation, which contains all required components for SOA. The standard WebLogic 12.2.1.0.0 Installer i.e. fmw_12.2.1.0.0_wls.jar, does not have the required JRF templates.

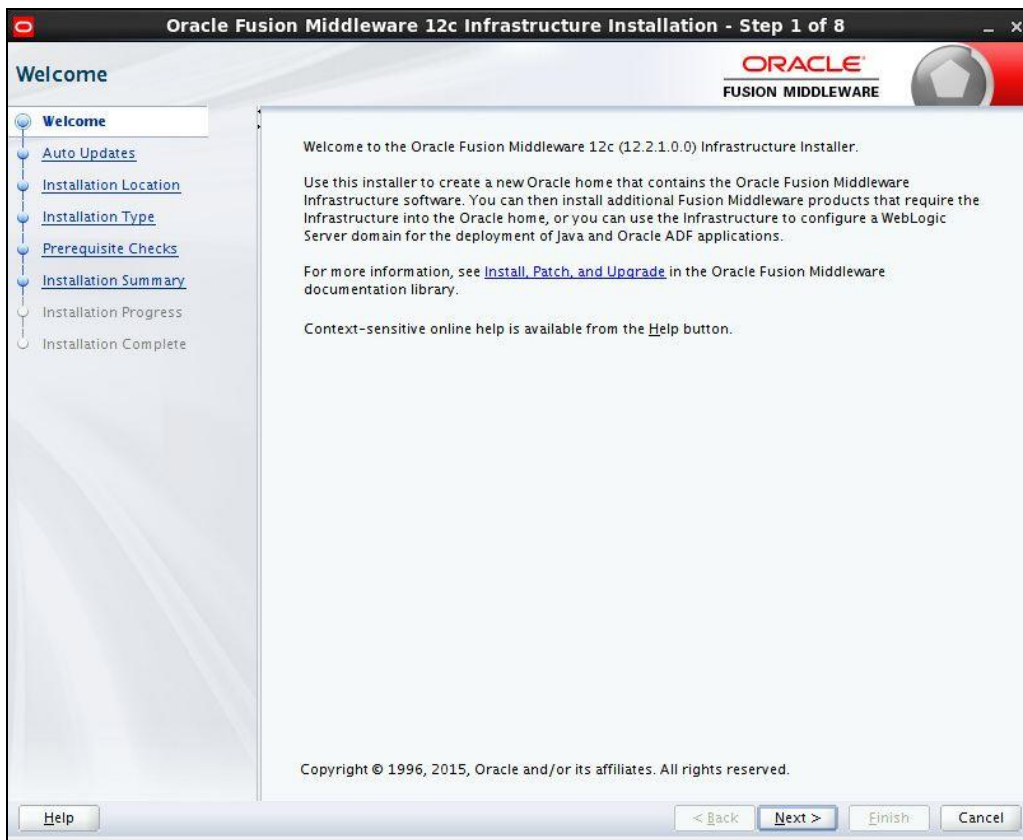
2.3 Install JDK

Login to WebLogic server host upload and install JDK package. Refer to the release certificate for the version of java JDK.

2.4 Installing WebLogic Server Software

```
[oracle@wls12c-node1 ~]$ cd /scratch/app/fmwTemp1221/  
[oracle@wls12c-node1 fmwTemp1221]$ unzip V78156-01.zip  
Archive: V78156-01.zip  
inflating: fmw_12.2.1_infrastructure.jar  
[oracle@wls12c-node1 fmwTemp1221]$ java -jar fmw_12.2.1 _infrastructure.jar
```

Step 1:



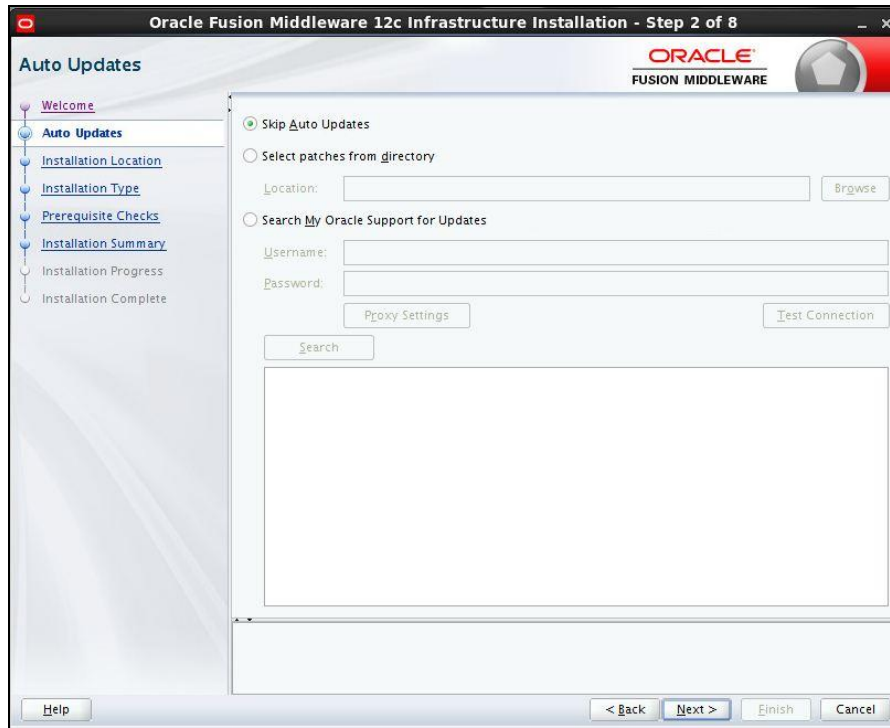
Step 2:

Option need to be selected based on the requirement:

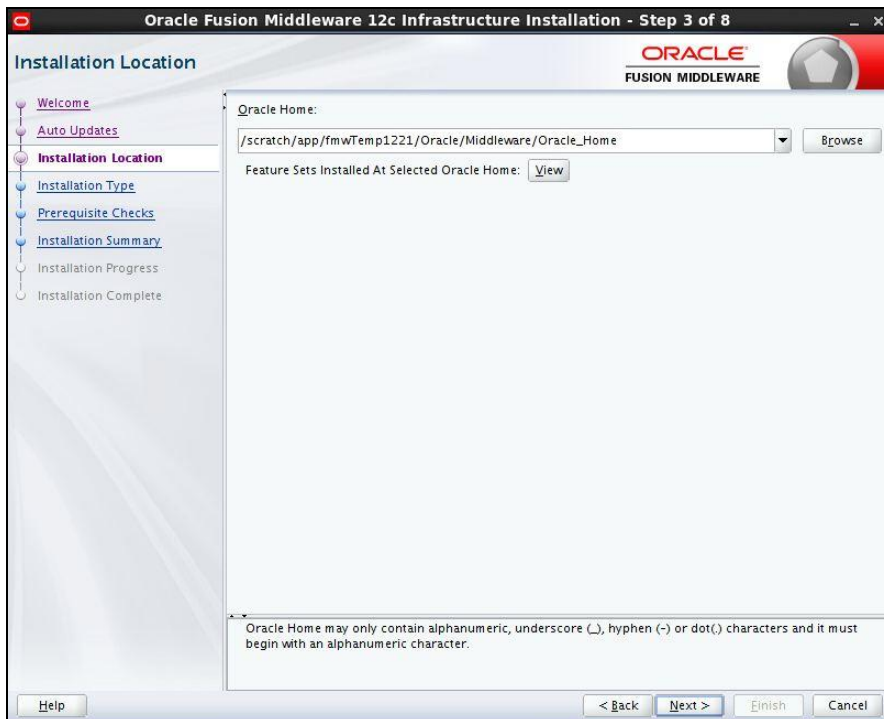
If you don't want the auto updates, select the first option.

If you are applying patches, select the second option.

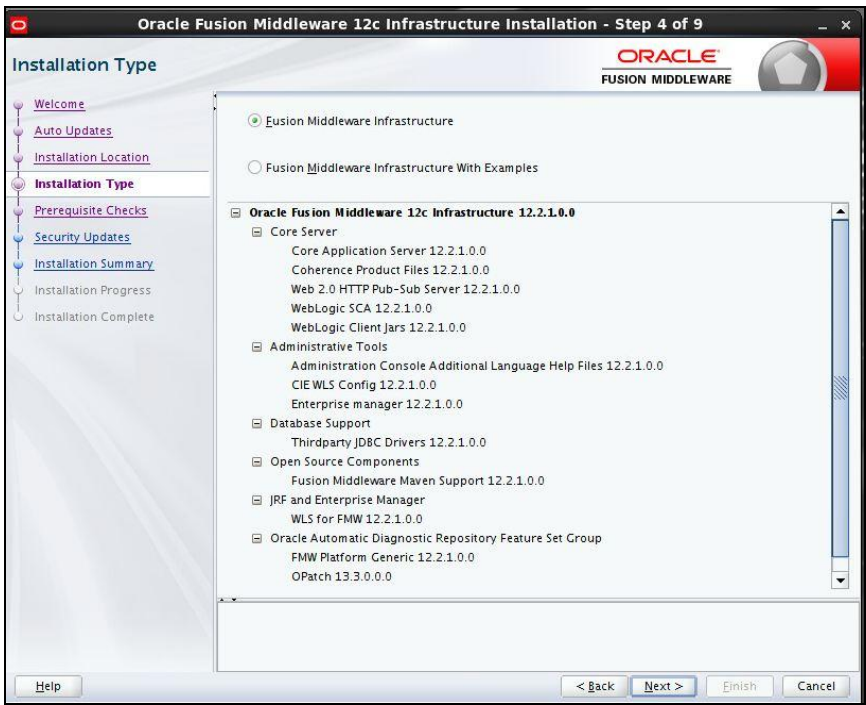
Please select the option based on the requirement:



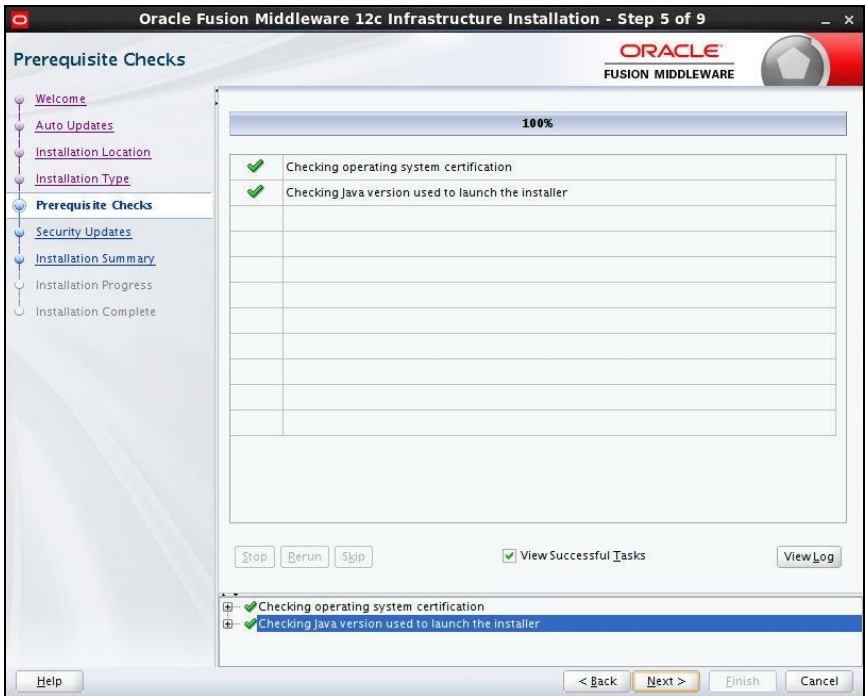
Step 3: Define the oracle home path



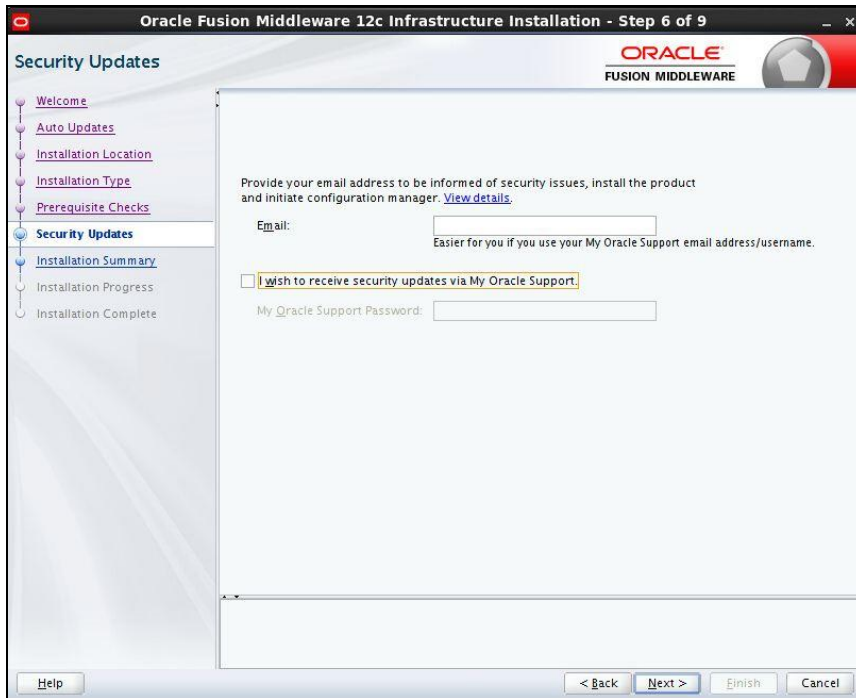
Step 4: Select fusion middleware infrastructure



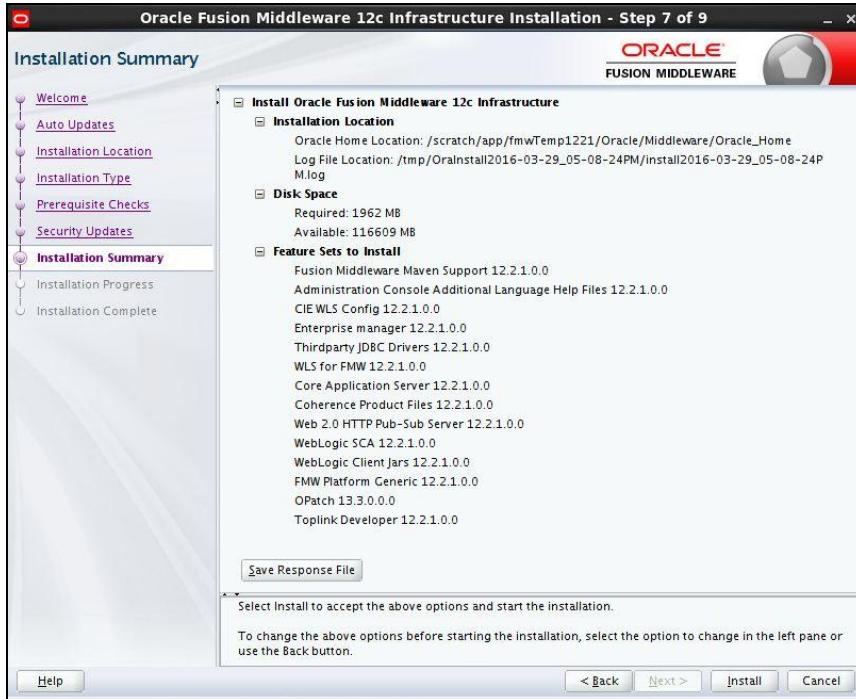
Step 5:



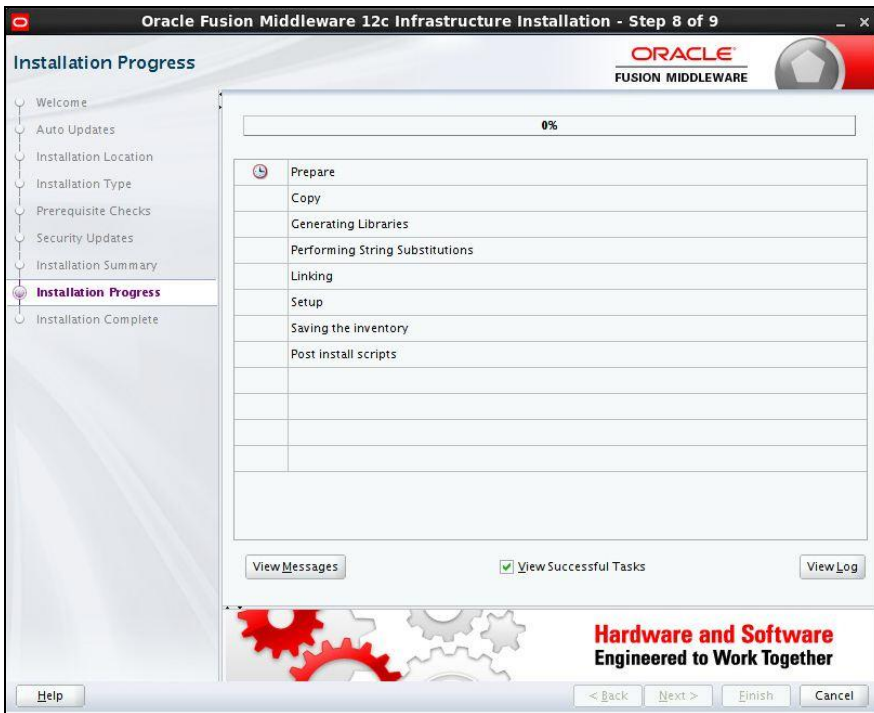
Step 6: Optional based on installation requirement



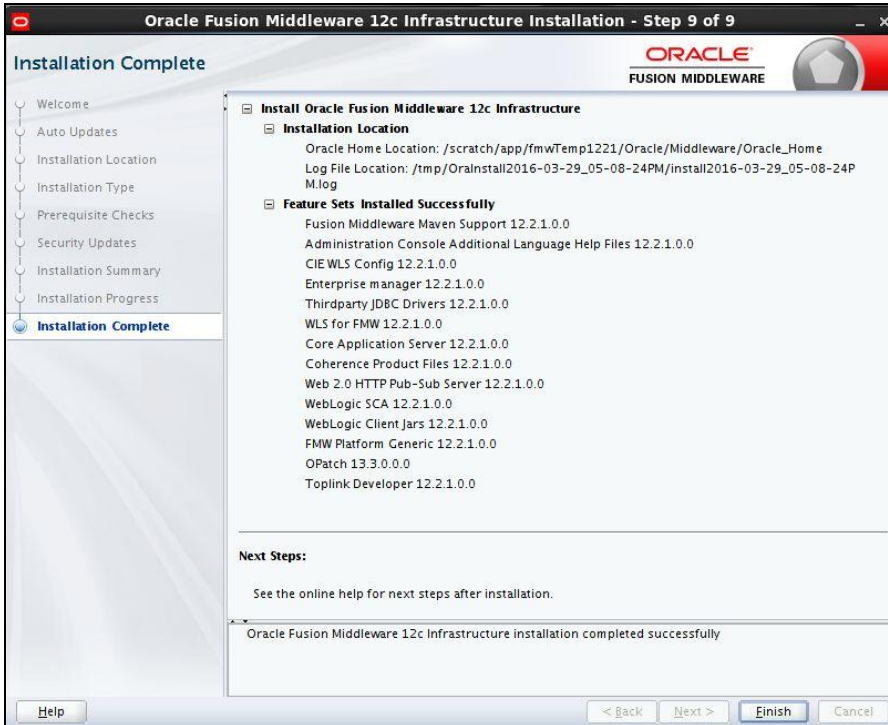
Step 7:



Step 8:



Step 9:

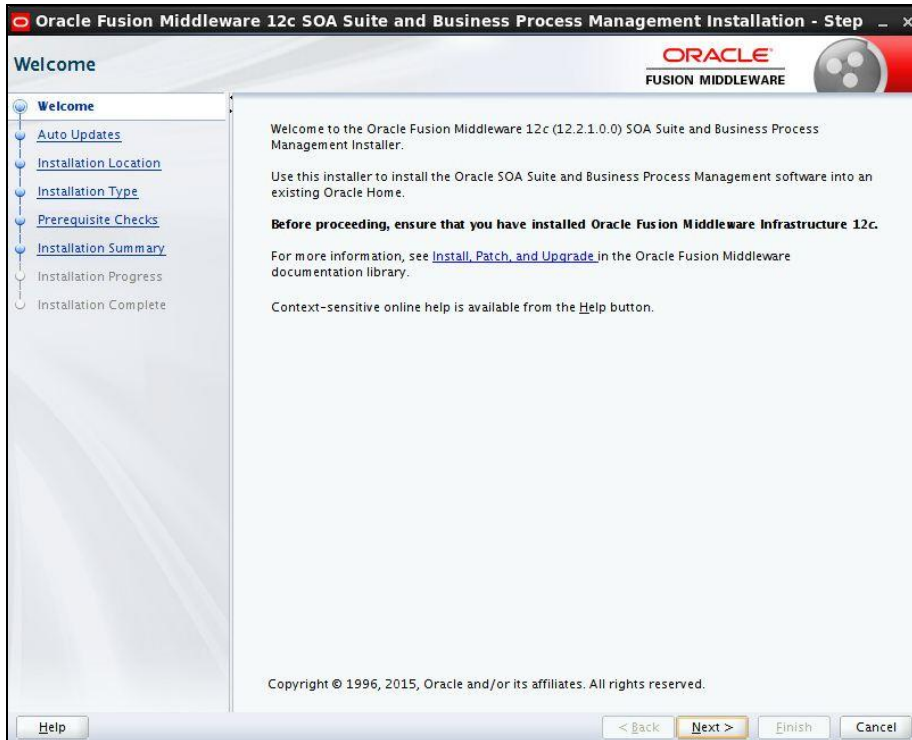


2.5 Installing Oracle Fusion Middleware 12c Software

```
[oracle@wls12c-node1 ~]$ cd /scratch/app/fmwTemp1221/
[oracle@wls12c-node1 fmwTemp1221]$ unzip V78169-01.zip
Archive: V78169-01.zip
  inflating: fmw_12.2.1.0.0 _soa.jar

[oracle@wls12c-node1 fmwTemp1221]$ java -jar fmw_12.2.1 _soa.jar
```

Step 1:

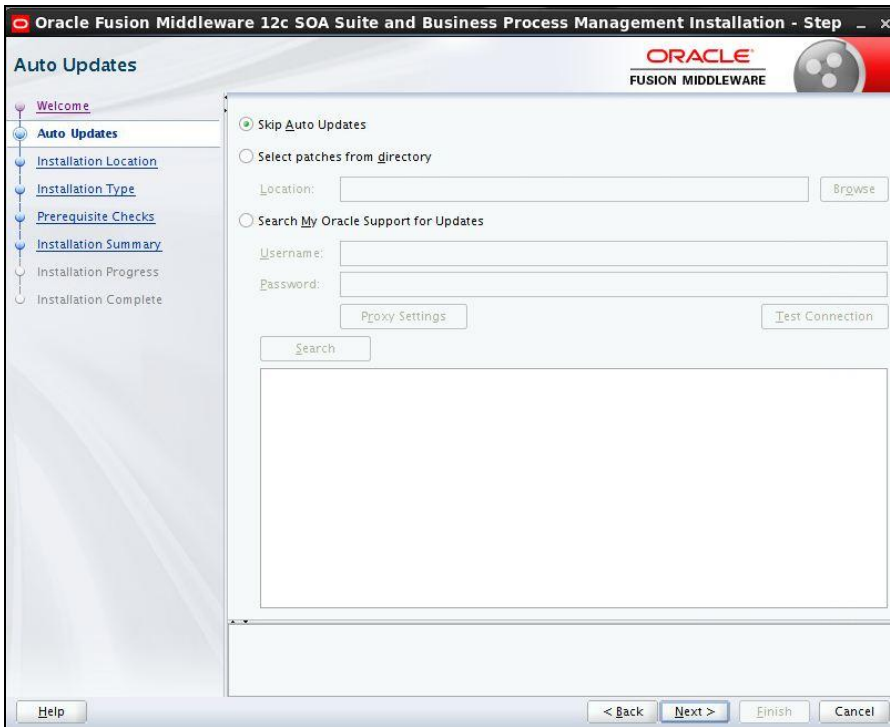


Step 2:

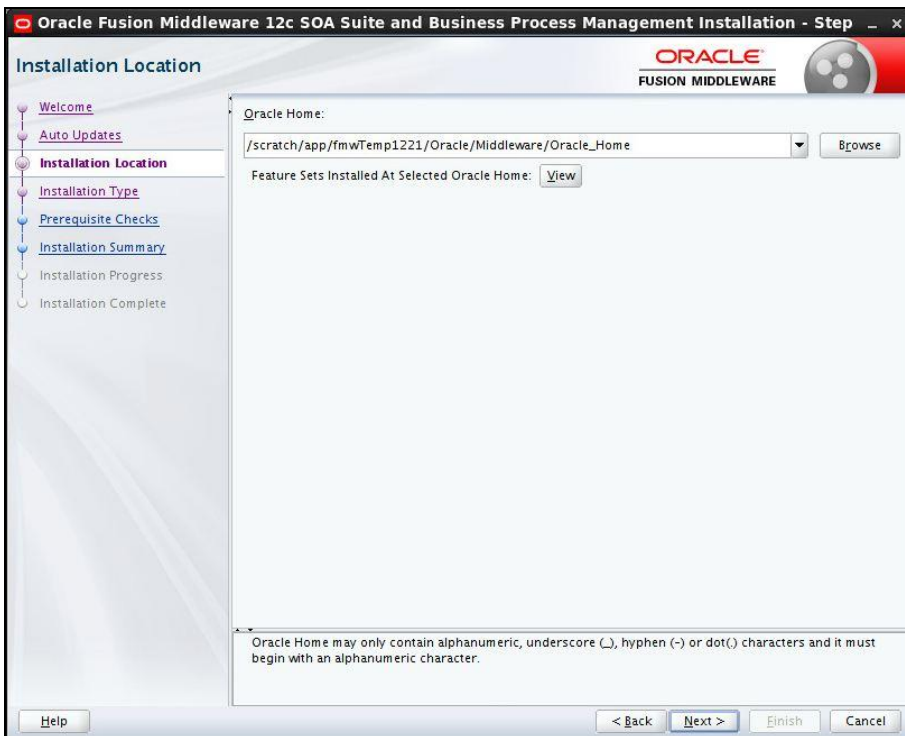
Option need to be selected based on the requirement:


- a) If you don't want the auto updates, select the first option.
- b) If you are applying patches, select the second option .

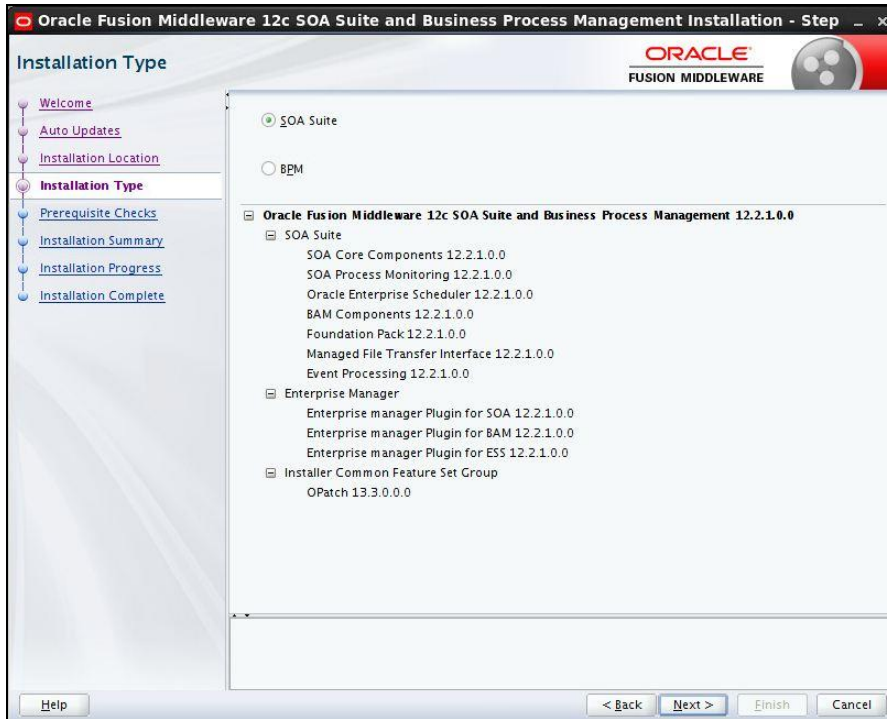
Please select the below option based on the requirement:



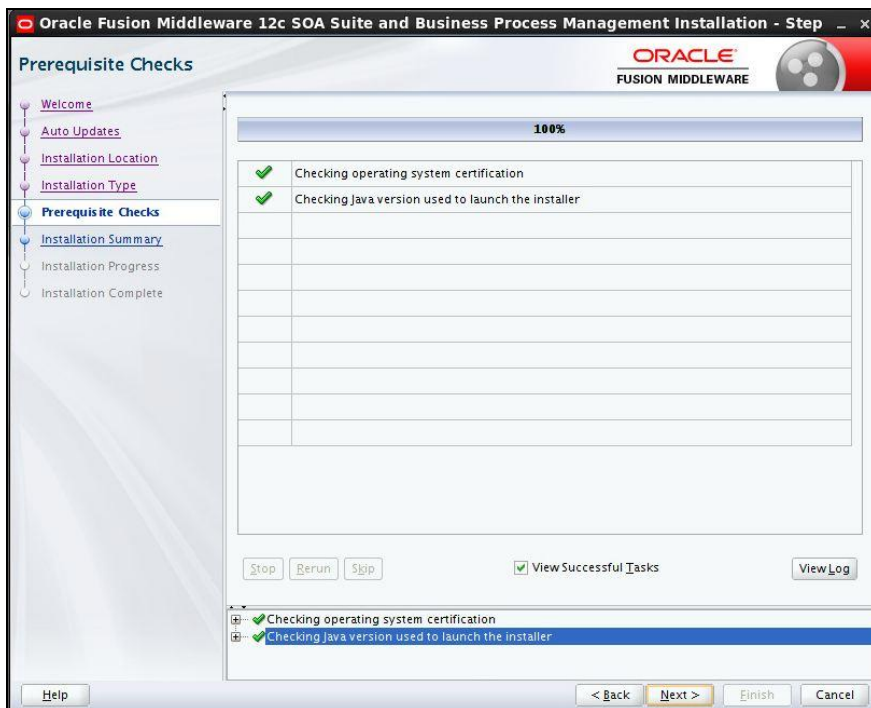
Step 3:



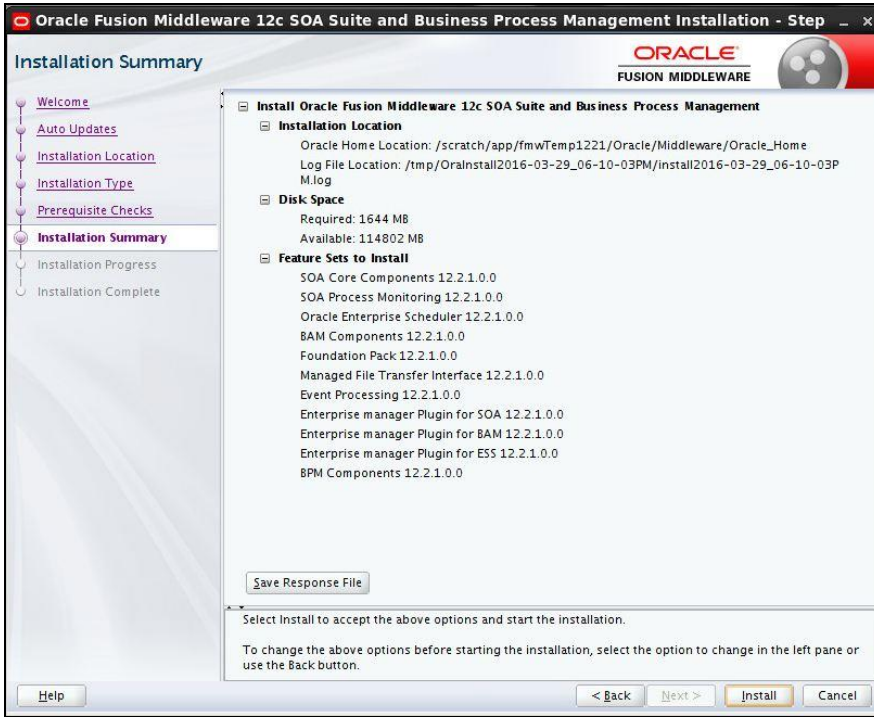
Step 4:  Please select BPM if the environment requires BPM process flow deployment



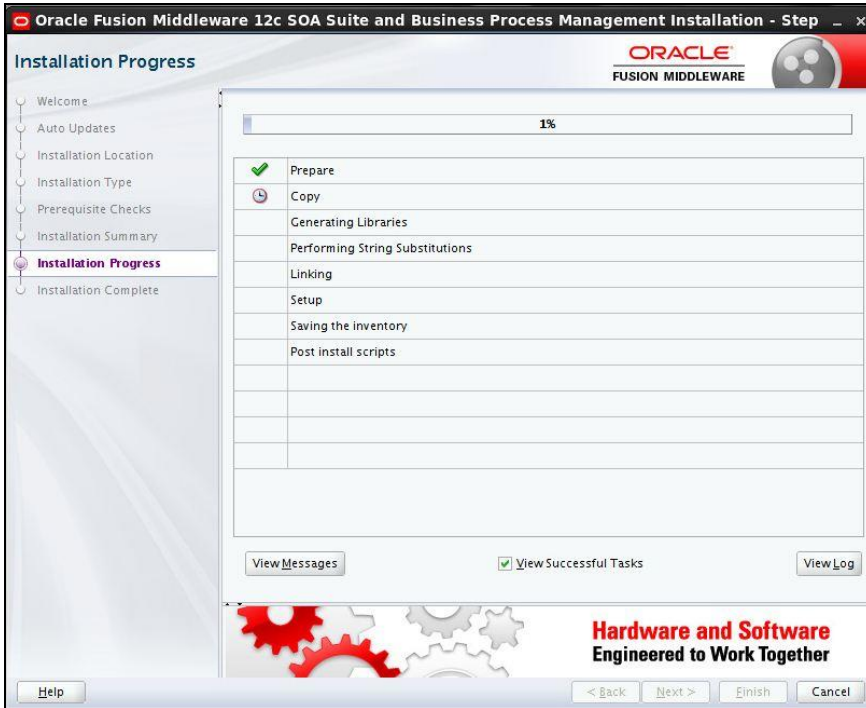
Step 5:



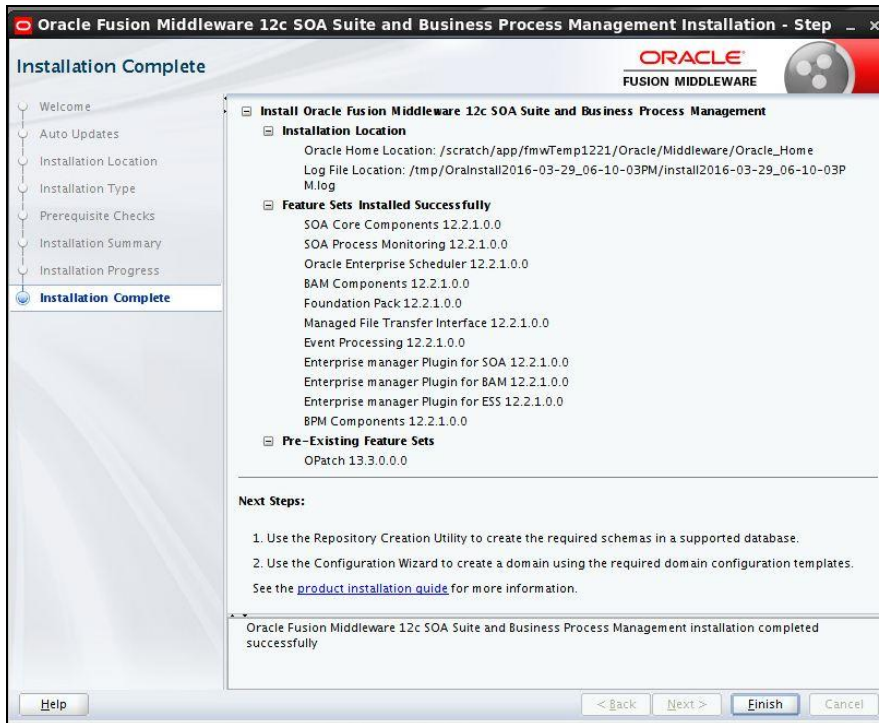
Step 6:



Step 7:



Step 8:



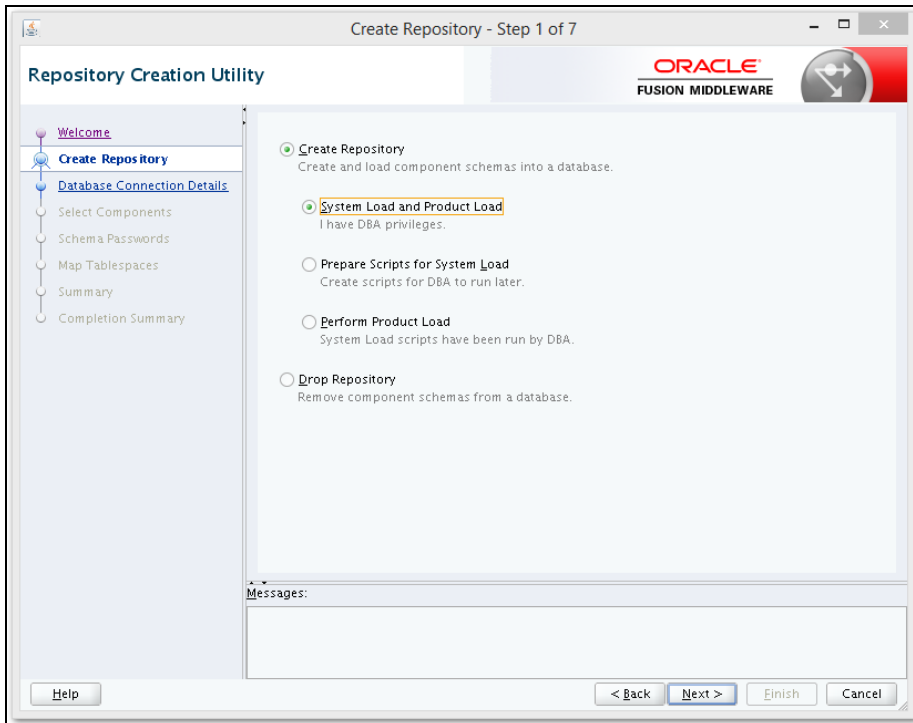
2.6 Creating Product Schemas in Oracle Database

The Repository Creation Utility (RCU) is the tool used to create schemas in a database. This tool is available once we've installed the Oracle Fusion Middleware Infrastructure software (Point 2).

Refer to [Oracle Fusion Middleware Creating Schemas with the Repository Creation Utility](#) for more information about the Repository Creation Utility.

- [oracle@wls12c-node1 fmwTemp1221]\$ cd /scratch/app/fmwTemp1221/Oracle/Middleware/Oracle_Home/bin/
- [oracle@wls12c-node1 bin]\$./rcu

Step 1:



Step 2: Define the host name port username and password for creating the RCU schemas in the database. The sys user required to create the rcu schemas.

Repository Creation Utility

Database Type: Oracle Database

Host Name:

Port: 1522

Service Name: ORDB23C

Username: sys
User with DBA or SYSDBA privileges. Example: sys

Password:

Role: SYSDBA
One or more components may require SYSDBA role for the operation to succeed.

Messages:

< Back Next > Finish Cancel

Repository Creation Utility - Checking Prerequisites

Checking Global Prerequisites	
✓ Initializing repository configuration metadata	00:01.215(sec)
✓ Obtain properties of the specified database	00:00.102(msec)
✓ Check requirement for specified database	00:01.625(sec)

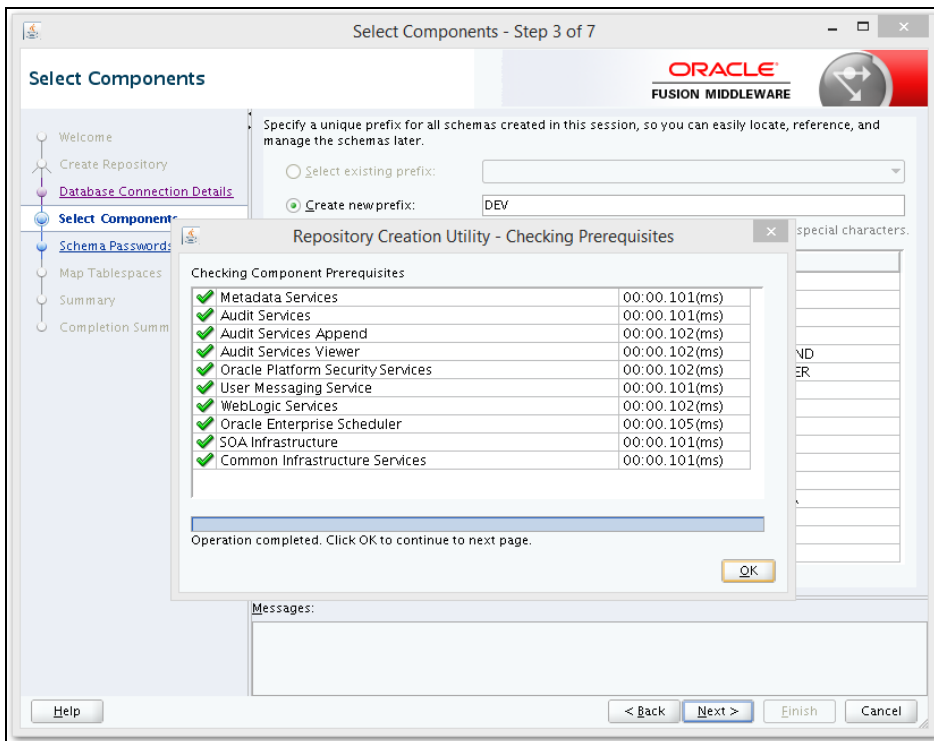
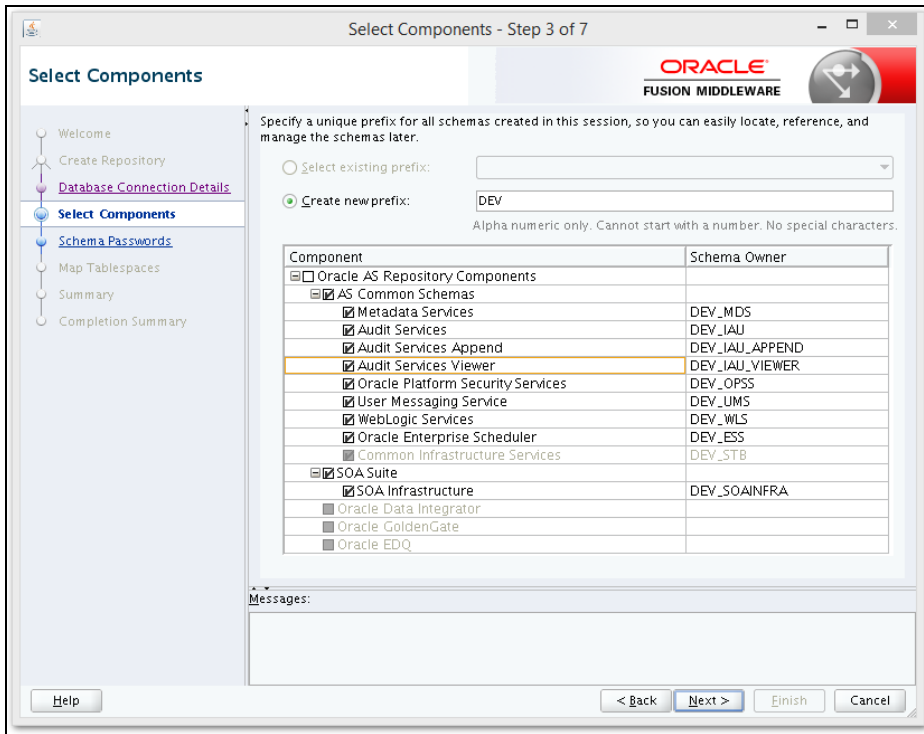
Operation completed. Click OK to continue to next page.

OK

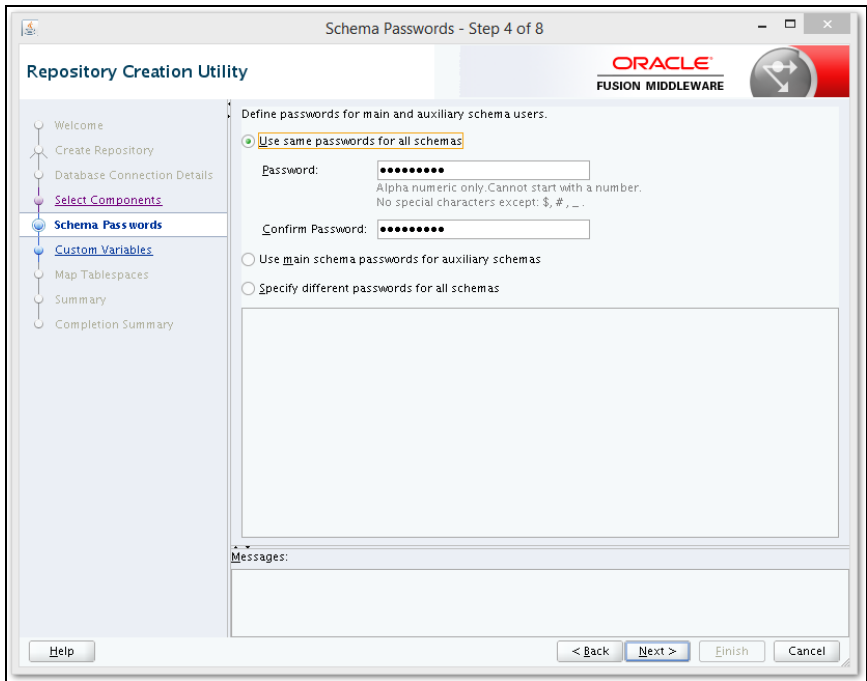
Messages:

< Back Next > Finish Cancel


Step 3: Define the prefix to be used for the schemas

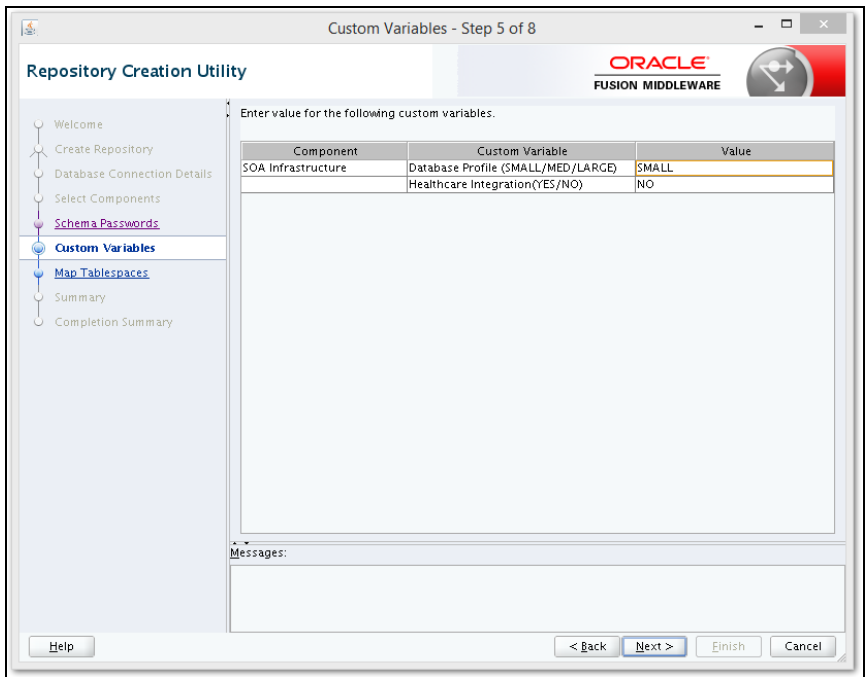


Step 4: Define the password for the schemas.

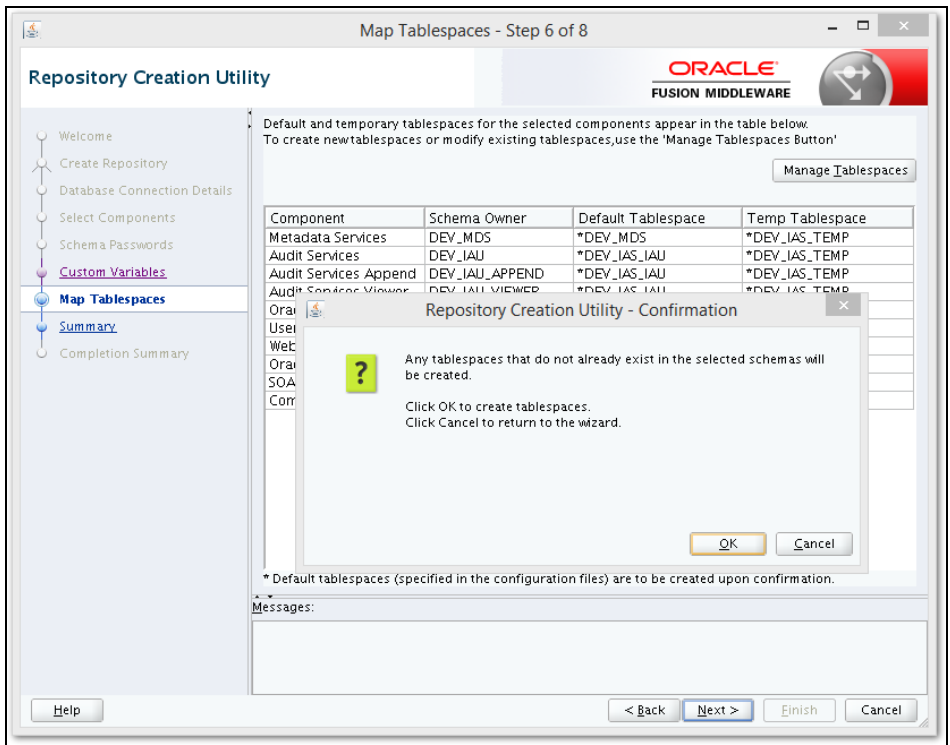
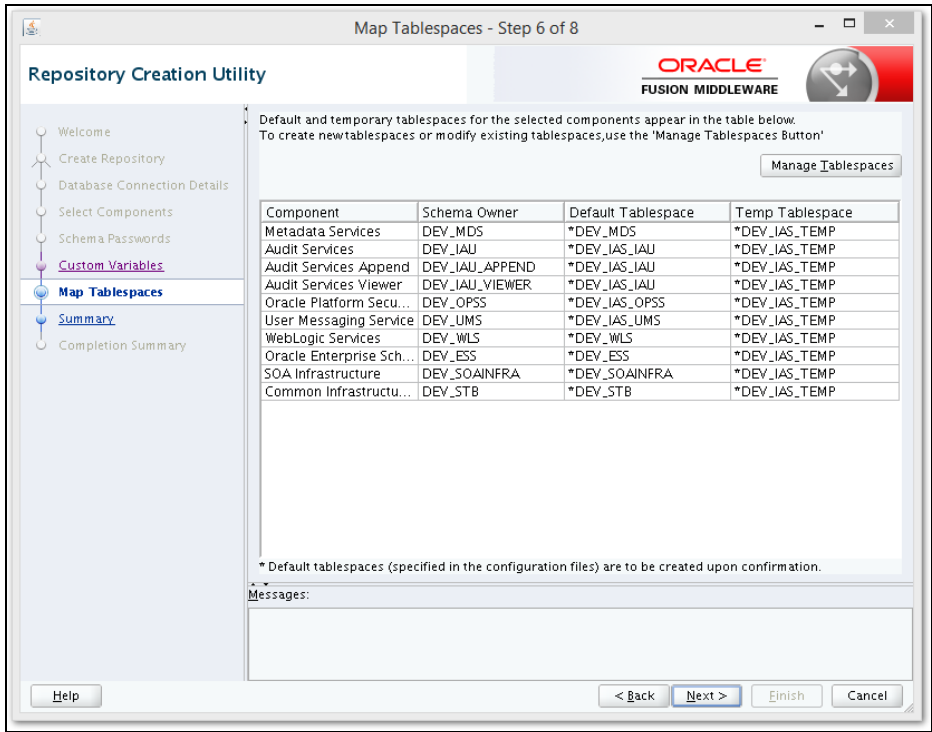


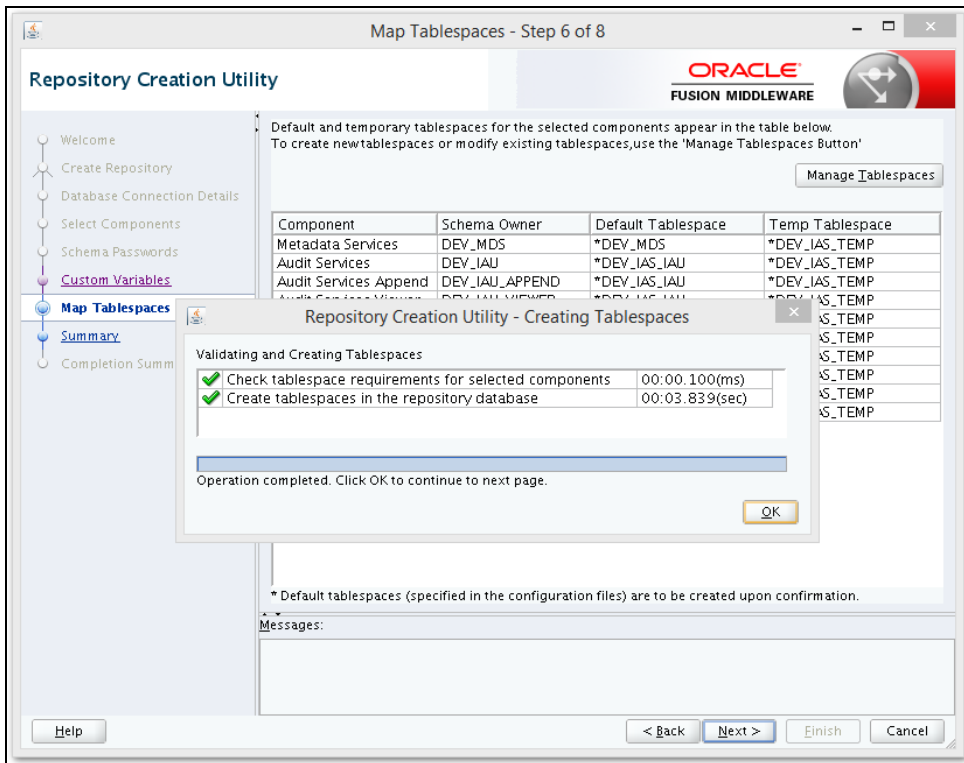
Note: It is important to remember the password or passwords that you enter during the process.

Step 5:  Please select the database profile based on requirement (SMALL/MED/LARGE)




Step 6:





Step 7:

Completion Summary - Step 8 of 8

Repository Creation Utility


- Welcome
- Create Repository
- Database Connection Details
- Select Components
- Schema Passwords
- Custom Variables
- Map Tablespaces
- Summary
- Completion Summary**

Database details:

Host Name: zeus.zion.local
 Port: 1522
 Service Name: PD801.ZION.LOCAL
 Connected As: sys
 Operation: System and Data Load concurrently
 RCU Logfile: /u01/app/oracle/logdir.2014-07-17_22-48/rcu.log
 Component Log Directory: /u01/app/oracle/logdir.2014-07-17_22-48
 Execution Time: 2 minutes 55 seconds
 View Log: [rcu.log](#)

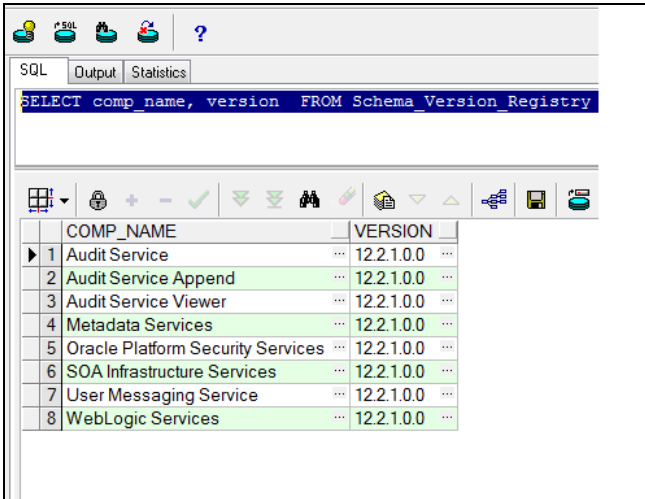
Prefix for (prefixable) Schema Owners:DEV

Component	Status	Time	Logfile(Click to view)
Metadata Services	Success	00:11.435(sec)	mds.log
Audit Services	Success	00:11.217(sec)	iau.log
Audit Services Append	Success	00:09.193(sec)	iau_append.log
Audit Services Viewer	Success	00:09.148(sec)	iau_viewer.log
Oracle Platform Security Services	Success	00:15.581(sec)	opss.log
User Messaging Service	Success	00:13.453(sec)	ucsums.log
WebLogic Services	Success	00:10.039(sec)	wls.log
Oracle Enterprise Scheduler	Success	00:13.767(sec)	ess.log
SOA Infrastructure	Success	00:59.186(sec)	soainfra.log
Common Infrastructure Services	Success	00:09.259(sec)	stb.log

[Help](#)
[< Back](#)
[Next >](#)
[Create](#)
[Close](#)

Note: Verifying Schema Version Numbers in the database where RCU is executed

```
SQL> select comp_name, version from schema_version_registry;
```

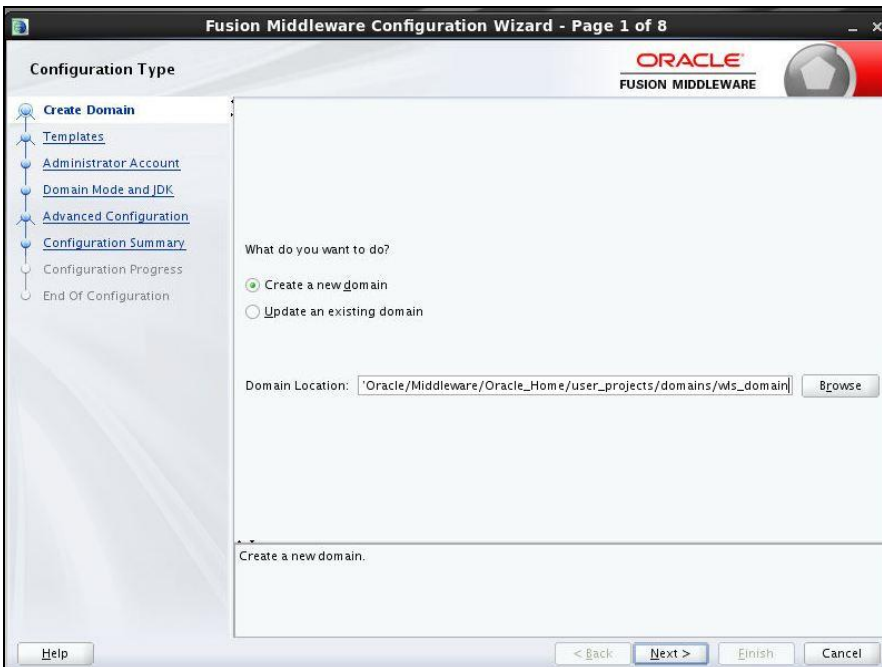


The screenshot shows the SQL Developer interface with a query window containing the SQL statement: `SELECT comp_name, version FROM Schema_Version_Registry`. Below the query window, a table displays the results of the query. The table has two columns: `COMP_NAME` and `VERSION`. The results are as follows:

	COMP_NAME	VERSION
1	Audit Service	12.2.1.0.0
2	Audit Service Append	12.2.1.0.0
3	Audit Service Viewer	12.2.1.0.0
4	Metadata Services	12.2.1.0.0
5	Oracle Platform Security Services	12.2.1.0.0
6	SOA Infrastructure Services	12.2.1.0.0
7	User Messaging Service	12.2.1.0.0
8	WebLogic Services	12.2.1.0.0

2.7 WebLogic Server Domain Configuration

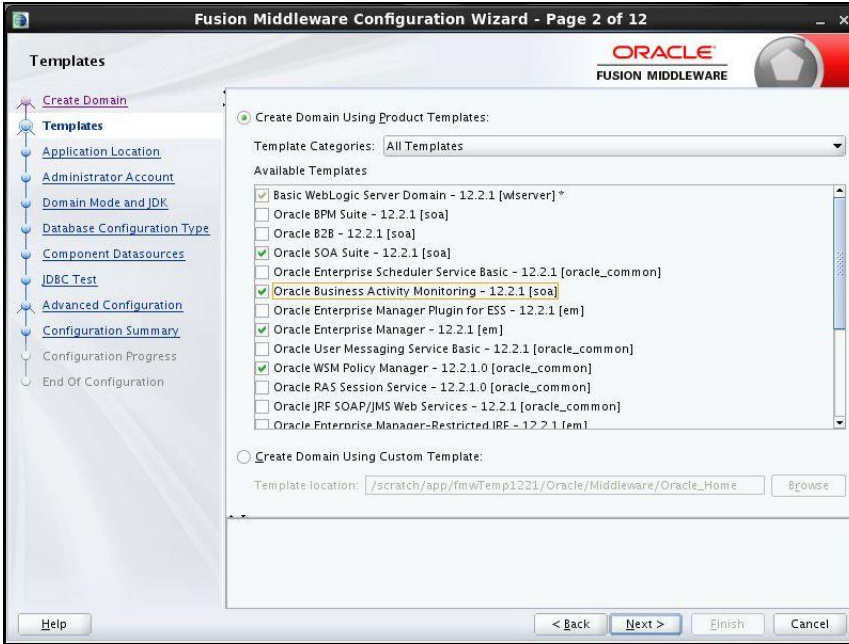
Step 1:



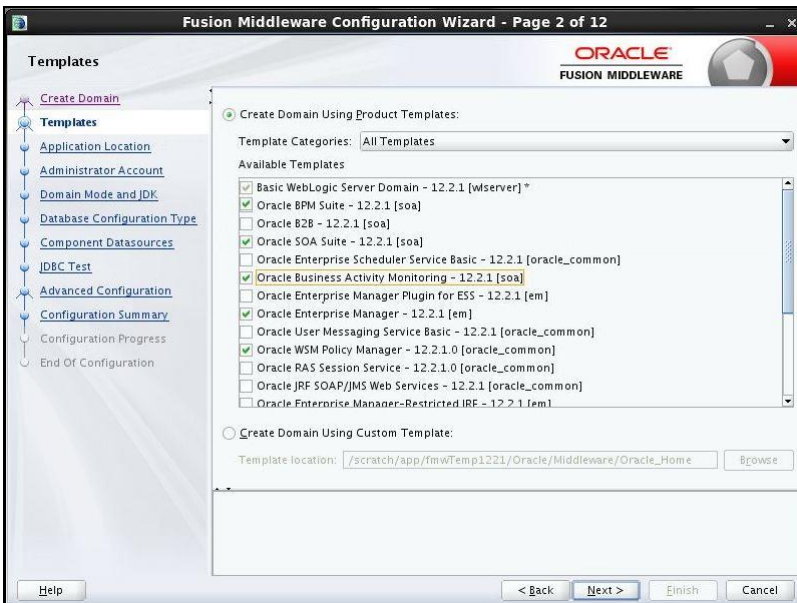
Step 2: Domain creation template

a. For BPEL only domain

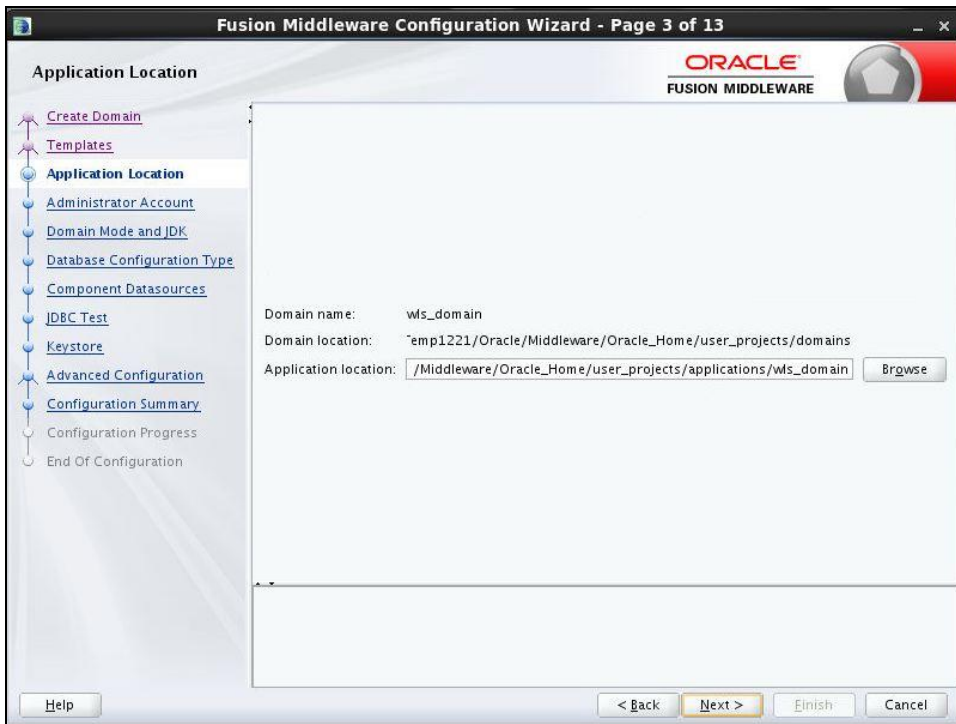
b.  Based on the requirement select the Oracle Business Activity Monitoring (BAM) check box.



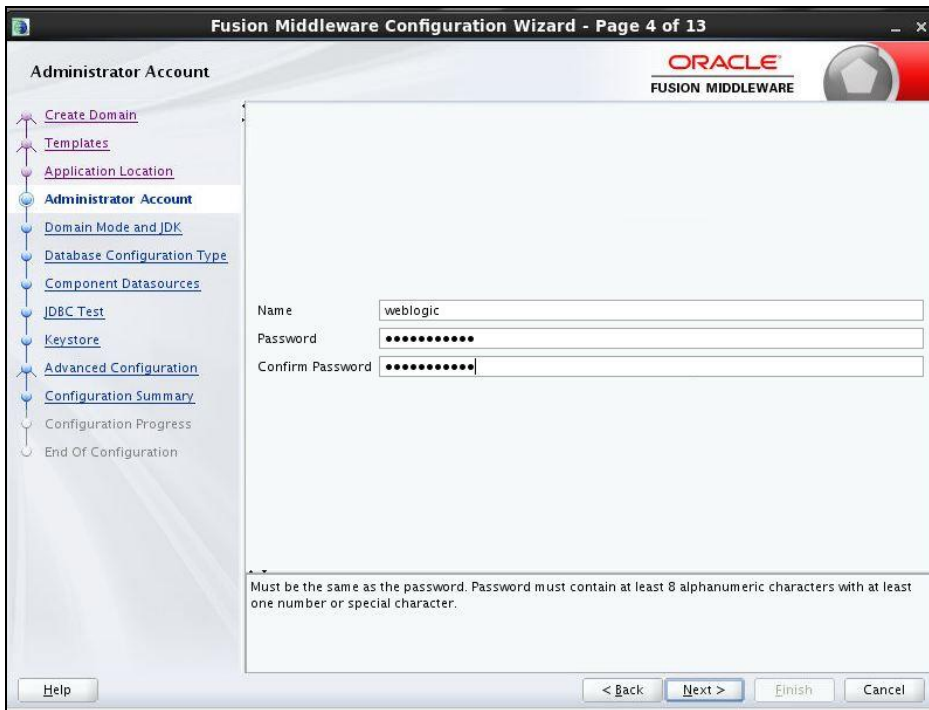
c. For BPM enabled domain (_If BPM process flows deployment is required then we have to select the Oracle BPM Suite – 12.2.1)




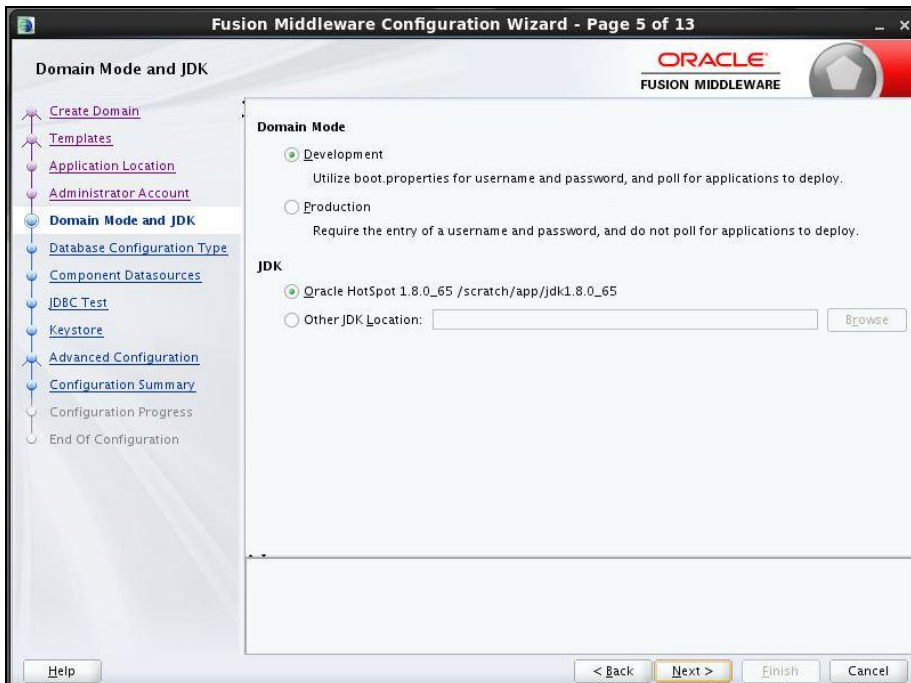
Step 3:



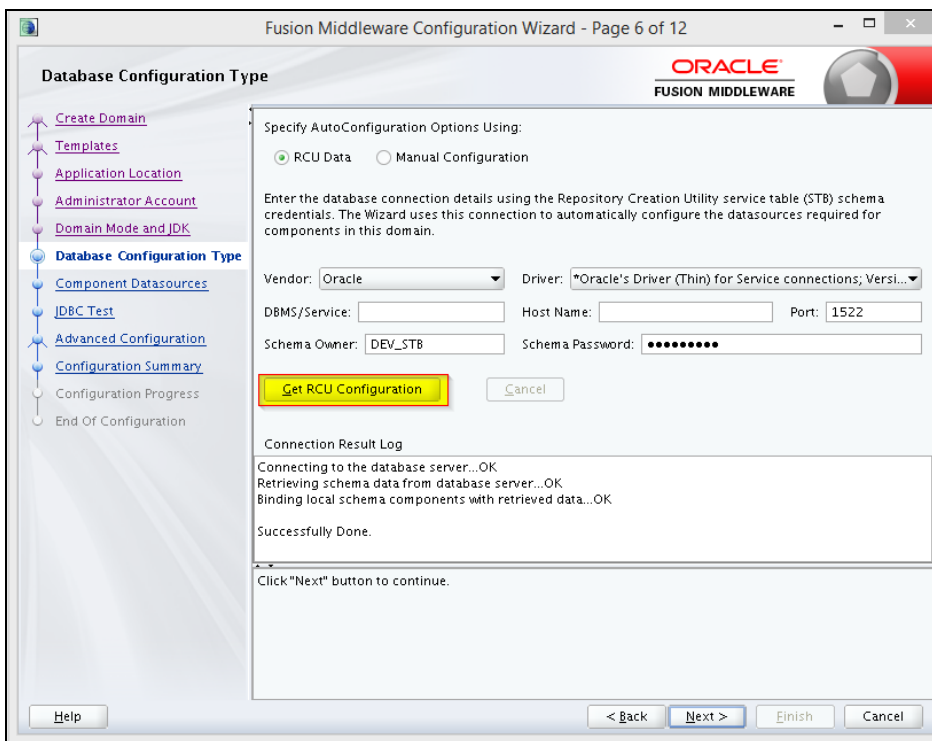
Step 4: Defining the domain user name and password



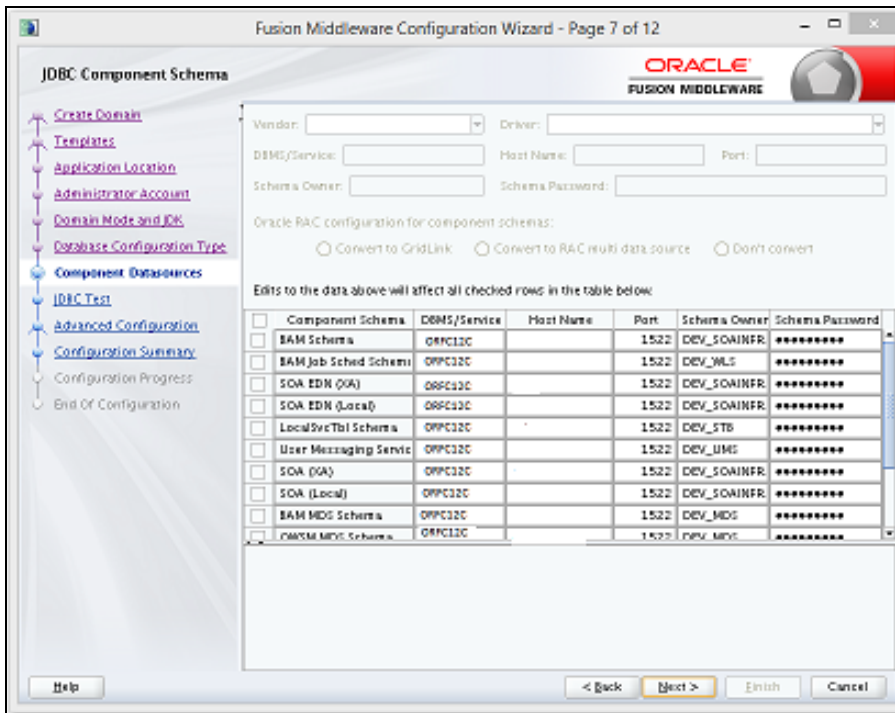
Step 5:  Domain mode needs to be production for all installations.



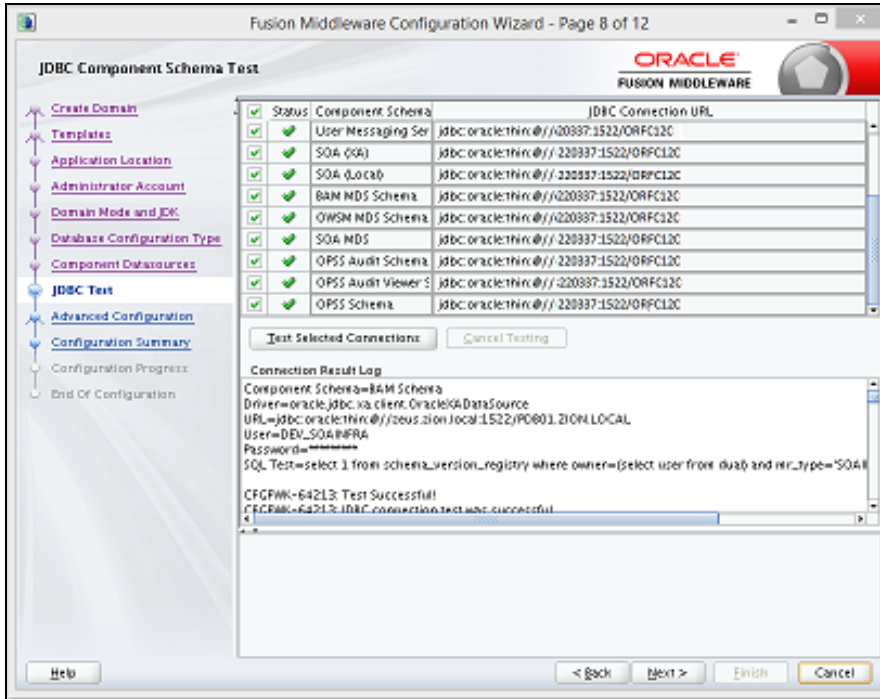
Step 6: Define the RCU schema details and the TNS connection details



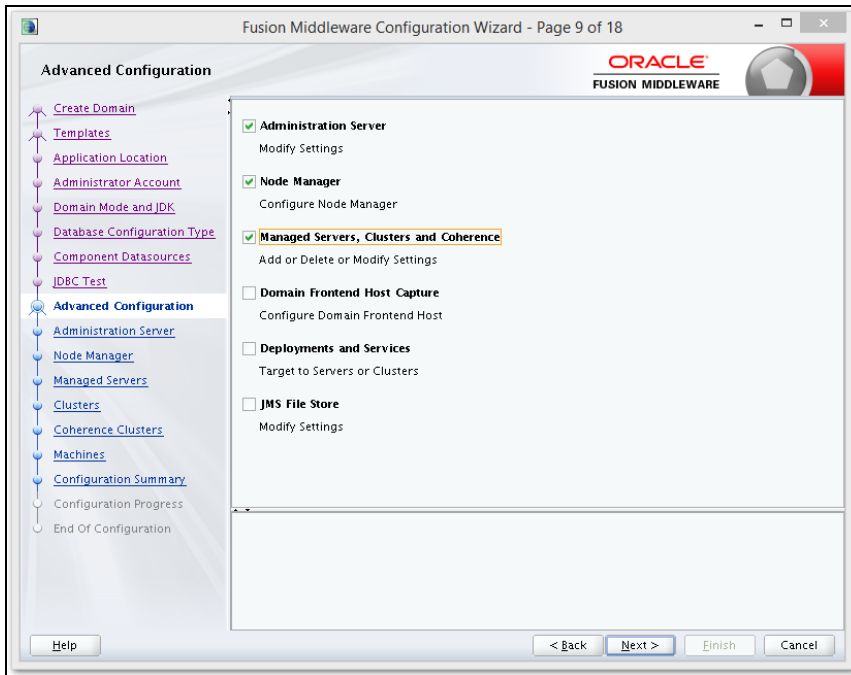
Step 7:



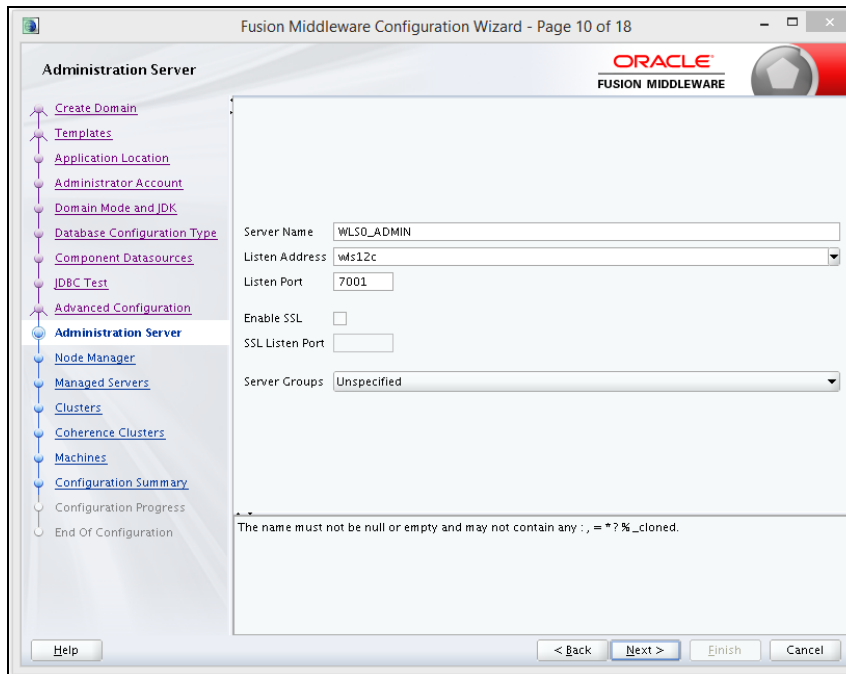
Step 8



Step 9: Select the admin server, node manager and managed servers.

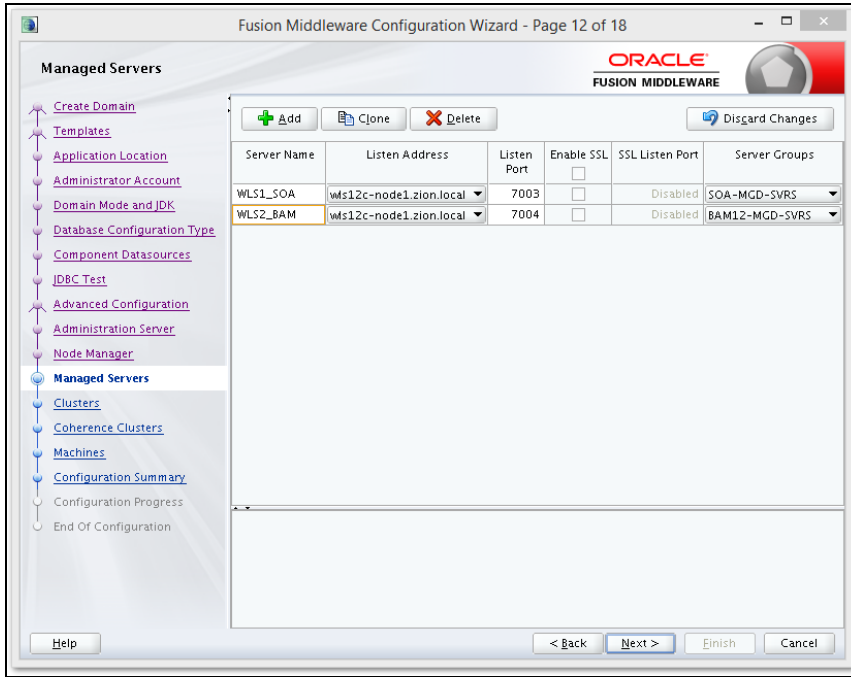


Step 10: Specify the server name as AdminServer and listener address as hostname. Based on the installation requirement, SSL need to be enabled.

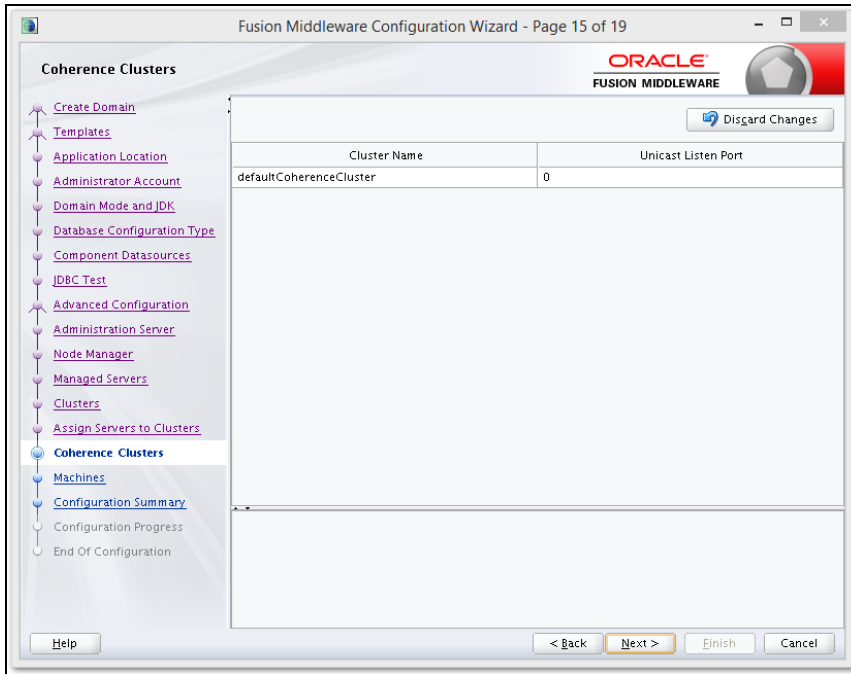


Step 11: specify the server name as soa_server1 and bam_server1 for the managed servers.

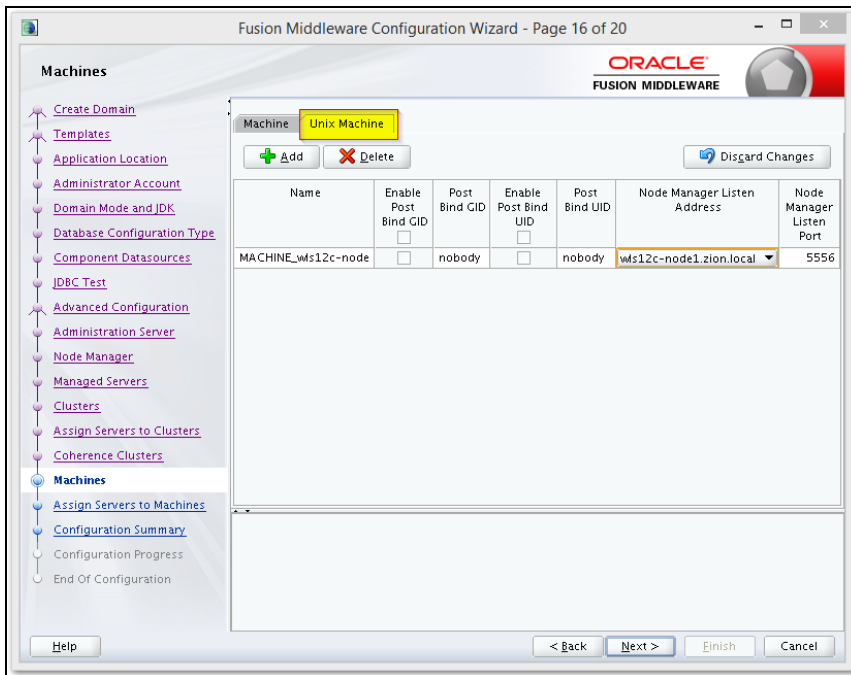
Based on the installation requirement SSL need to be enabled for managed servers



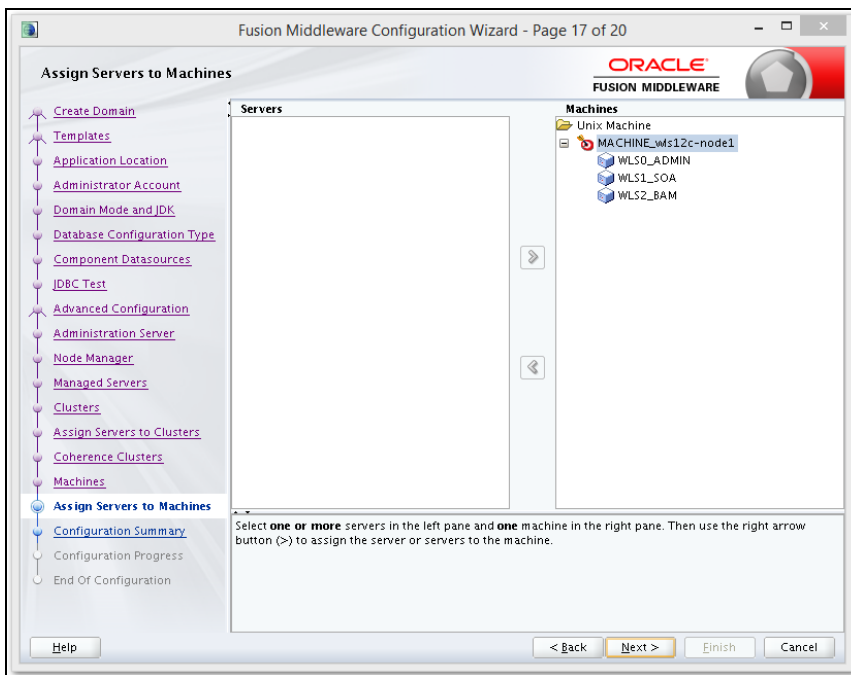
Step 12:



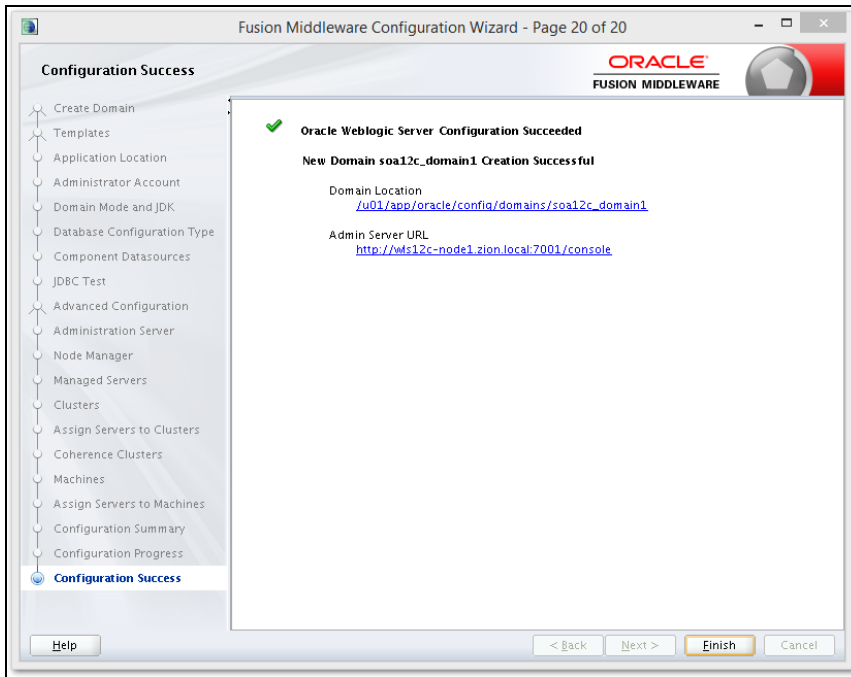
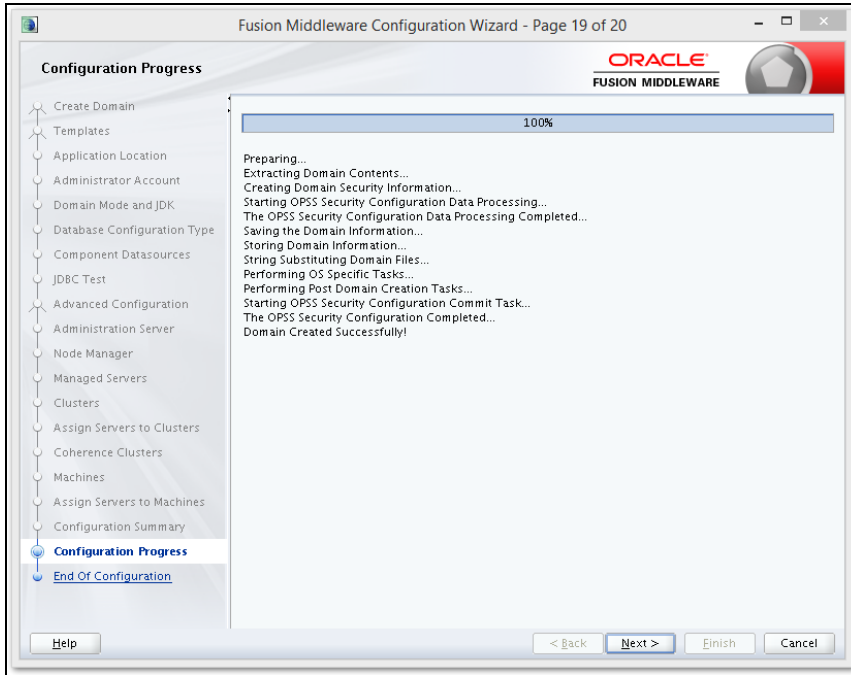
Step 13:



Step 14:



Step 15:



2.8 Remote Setup Configuration

Remote setup means SOA is installed in different machine and EAR is running in different machine.

Configuring FLEXCUBE Application to point to remote BPEL instances

1. Following Jars has to be copied to <Weblogic_home>\<domain>\lib

Jar to be copied	Path where the jar is available in SOA Middleware
bpm-services.jar	%Middleware Home%/soa/soa/modules/oracle.soa.workflow_11.1.1
fabric-runtime.jar	%Middleware Home%/soa/soa/modules/oracle.soa.fabric_11.1.1
tracking-fabric.jar	
tracking-api.jar	
jrf-api.jar	%Middleware Home%/oracle_common/modules/oracle.jrf
orabpel-common.jar	%Middleware Home%/soa/soa/modules/oracle.soa.bpel_11.1.1
orabpel-thirdparty.jar	
orabpel.jar	
soa-infra-mgmt.jar	%Middleware Home%/soa/soa/modules/oracle.soa.mgmt_11.1.1
xml.jar	%Middleware Home%/oracle_common/modules/oracle.xdk
xmlparserv2.jar	
mdsrt.jar	%Middleware Home%/oracle_common/modules/oracle.mds
com.oracle.webservices.fmw.wsc lient-rt-impl.jar	%Middleware Home%/oracle_common/modules

2. Additionally if BPMN enabled

Jar to be copied	Path where the jar is available in SOA Middleware
oracle.bpm.bpm-services.client.jar	%Middleware
oracle.bpm.bpm-services.interface.jar	Home%/soa/soa/modules/oracle.bpm.client_11.1.1
oracle.bpm.project.draw.jar	%Middleware
oracle.bpm.project.model.jar	Home%/soa/soa/modules/oracle.bpm.project_11.1.1
oracle.bpm.core.jar	%Middleware
oracle.bpm.ui.jar	Home%/soa/soa/modules/oracle.bpm.workspace_11.1.1
oracle.bpm.casemgmt.interface.jar	%Middleware
	Home%/soa/soa/modules/oracle.bpm.runtime_11.1.1

3. The jars copied have to be from same soa-suite version where BPEL processflows deployed. Ie, We cannot have jars from soa12.1.3.0.0 and BPEL deployed in soa12.2.1.0.0 It should be consistent.

4. The properties file **fcubs.properties** should read as below

```
WORKFLOW_CLIENT_TYPE =REMOTE
java.naming.provider.url =t3://10.184.74.143:8001/?partitionName=DOMAIN (Remote soa server provider url)
java.naming.security.principal =weblogic (Remote bpel server userid)
java.naming.security.credentials=RF2MRTP/MG8TB1T5QG6lnQ== (Remote soa server password)
dedicated.connection =true
domain.name =default (Remote soa server partition)
domain.pwd =RF2MRTP/MG8TB1T5QG6lnQ== (Remote soa server password)
```

5. Configure domain password same as for both fcj ear domain and remote BPEL domain and DowngradeUntrusted Principals has to be checked

Mapping

- Reset the EnforceStrictURLPattern flag

System Status

Health of Running Servers

- Failed (0)
- Critical (0)
- Overloaded (0)
- Warning (0)
- OK (2)

Advanced

Security Interoperability Mode: default

Credential: [Masked]

Confirm Credential: [Masked]

NodeManager Username: weblogic

NodeManager Password: [Masked]

Confirm NodeManager Password: [Masked]

Web App Files Case Insensitive: false

Enforce Strict URL Pattern

Downgrade Untrusted Principals

Principal Equals Case Insensitive

Principal Equals Compare DN and GUID

Compatibility Connection Filters Enabled

Allow Security Management Operations if Non-dynamic Changes have been Made

Clear Text Credential Access Enabled

Find: j.lang.SecurityException



SOA Suite Setup for BPEL Process Flow
[February] [2022]
Version 14.5.3.0.0

Oracle Financial Services Software Limited
Oracle Park
Off Western Express Highway
Goregaon (East)
Mumbai, Maharashtra 400 063
India

Worldwide Inquiries:
Phone: +91 22 6718 3000
Fax: +91 22 6718 3001
www.oracle.com/financialservices/

Copyright © [2007], [2022], Oracle and/or its affiliates.

Oracle and Java are registered trademarks of Oracle and/or its affiliates. Other names may be trademarks of their respective owners.

U.S. GOVERNMENT END USERS: Oracle programs (including any operating system, integrated software, any programs embedded, installed or activated on delivered hardware, and modifications of such programs) and Oracle computer documentation or other Oracle data delivered to or accessed by U.S. Government end users are "commercial computer software" or "commercial computer software documentation" pursuant to the applicable Federal Acquisition Regulation and agency-specific supplemental regulations. As such, the use, reproduction, duplication, release, display, disclosure, modification, preparation of derivative works, and/or adaptation of i) Oracle programs (including any operating system, integrated software, any programs embedded, installed or activated on delivered hardware, and modifications of such programs), ii) Oracle computer documentation and/or iii) other Oracle data, is subject to the rights and limitations specified in the license contained in the applicable contract. The terms governing the U.S. Government's use of Oracle cloud services are defined by the applicable contract for such services. No other rights are granted to the U.S. Government.

This software or hardware is developed for general use in a variety of information management applications. It is not developed or intended for use in any inherently dangerous applications, including applications that may create a risk of personal injury. If you use this software or hardware in dangerous applications, then you shall be responsible to take all appropriate failsafe, backup, redundancy, and other measures to ensure its safe use. Oracle Corporation and its affiliates disclaim any liability for any damages caused by use of this software or hardware in dangerous applications.

This software and related documentation are provided under a license agreement containing restrictions on use and disclosure and are protected by intellectual property laws. Except as expressly permitted in your license agreement or allowed by law, you may not use, copy, reproduce, translate, broadcast, modify, license, transmit, distribute, exhibit, perform, publish or display any part, in any form, or by any means. Reverse engineering, disassembly, or decompilation of this software, unless required by law for interoperability, is prohibited.

The information contained herein is subject to change without notice and is not warranted to be error-free. If you find any errors, please report them to us in writing.

This software or hardware and documentation may provide access to or information on content, products and services from third parties. Oracle Corporation and its affiliates are not responsible for and expressly disclaim all warranties of any kind with respect to third-party content, products, and services. Oracle Corporation and its affiliates will not be responsible for any loss, costs, or damages incurred due to your access to or use of third-party content, products, or services.